



In preparation for the 2018 groundfish and salmon seasons, we made changes to the eLandings system operation's structure and added the ability to create and store tLandings configuration profiles. A review of these changes is the focus of this edition of the FishWire.

After reading these articles, if you have additional questions, please contact us at elandings@alaska.gov. We are always happy to be of assistance.

Note: The links within this newsletter will display the referenced documents and resources. If you wish to access these resources, please use the electronic copy of FishWire. Feel free to forward the electronic newsletter to any of your coworkers.

Contents

[ELANDINGS OPERATIONS AND USER ACCOUNTS: WHAT HAS CHANGED?.....1](#)

[MANAGING tLANDINGS CONFIGURATION PROFILES.3](#)

eLandings operations and user accounts: What has changed?

Earlier this year the eLandings team finished a significant change to the structure of operations and user access to data. The primary reason why these changes were made was to limit access to your confidential fisheries data to only the authorized users you designate.

Just as a reminder, for the purposes of the eLandings system, an operation is defined as *an entity that will harvest or receive seafood product and will complete landing and production reports*. Operation entities include seafood plants, at-sea catcher processors and floating processors, catcher-sellers, direct marketers, and buyer-exporters. Several permits and licenses can be associated with an operation, including a Fisheries Business License (Processor Code), a Federal Processor Permit, a Registered Buyers Permit, and a Registered Crab Receiver Permit.

When an eLandings operation is created, we now create an Operation ID. You can see the highlighted Operation ID in the image for Sunrise Processing Plant (Figure 1).

In this case, Sunrise Processing Plant's Operation ID is 1923. Authorized users for Sunrise Processing are linked to this Operation ID. All tenders associated with this processor also are assigned the Operation ID of 1923. This means that all administrative and normal users can use the Processor Tender Interface (PTI) to manage thumb drives for tenders.

We commonly refer to the Plant/Receiver as the parent operation, and buying stations, including beach truck operations, as child operations. With the restructuring of the

(continued on page 2)

Administer Operation		Status:	Enabled
ID:	1923	Type:	Plant/Receiver
Name:	SUNRISE PROCESSING PLANT	Fed Permit:	970505
Proc Code:	T0030	RCR#:	
Reg Buyer#:	980100	Port:	JNU

Figure 1.

(continued from page 1)

eLandings operations, buying stations, beach truck operations, and custom processing relationships are assigned separate Operation IDs (Figure 2).

While they share a processor code which identifies ownership of the seafood product, they are assigned a unique Operation ID.

How does this restructuring affect authorized users?

Authorized users are assigned to each operation with a unique ID. In other words, a parent operation's users do not have automatic access to the harvest records for buying stations and custom processing relationships, unless specifically assigned to these operations. An employee at a seafood processing facility that needs to manage data for buying stations, beach truck operations, or custom processing relationships must be added to each of these operations.

When a new child operation is established by the parent plant by an administrator, only that administrator is assigned to the new operation. All additional users must be added even if they are an authorized user, including administrative authorized user, with the parent operation.

How does this restructuring affect Search Tools, the Data Extract and Special Reports?

If you have authorized users, irrespective of their authorization type, that use the Search function in the eLandings Web Application or use the Data Extract tool to extract data, the reports or data that are returned will be limited to those operations they are authorized for. If the user needs access to all data records associated with the seafood processing facility, that user must be authorized for all parent and child operations, including custom processing relationships.

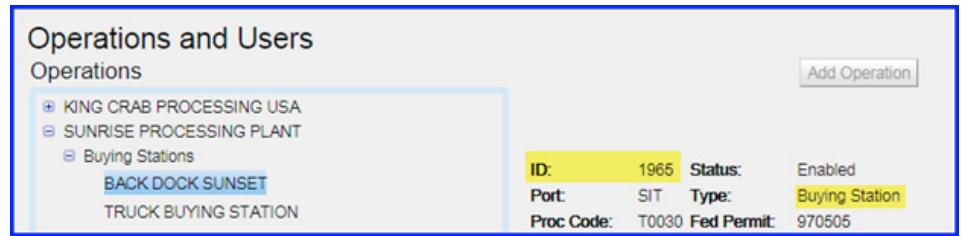


Figure 2.

The eLandings Web Application includes special reports located under the Generate Reports menu. These reports include the Bristol Bay Weekly Report, the Data Assurance Report, and the Processor Average Weight Report. All reports are aggregated to the Plant/Receiver Operation ID. If the individual requesting the report is authorized for the parent plant, the data returned will include all reports based upon the Fisheries Business License Processor Code.

Many seafood companies have processing facilities in multiple locations throughout Alaska. Some authorized users access data records from another location, including corporate headquarters. The identical rule applies: if the user needs access to all data records associated with the seafood processing facility, that user must be authorized for all parent and child operations, including custom processing relationships.

What About the COAR Report?

The authorized user to generate and submit the COAR must be authorized on the parent operation.

Recommendations

We recommend that you periodically review all operations, including custom processing operations. Tenders can be deleted and custom processing relationships or buying stations closed, upon request. We hope you will periodically review user accounts associated with your parent and child operations. Remove users that no longer work for your facility. If you have users that needs full access to

data records for the parent plant and all child operations, make certain that individual is listed on all operations, including custom processing relationships.

When you create a new child operation, make certain to add at least one additional administrative user to assure that the operation administration tasks can be completed in the event of absence.

If you request a report and suspect that some data records are absent, review all child operations to determine if you are authorized. You may need to consult with an administrator authorized for the parent operation.

Summary

The operations structure of eLandings has changed and users associated with child operations, such as buying stations and beach truck operations, do not automatically have access to data records. Child operations and custom processing relationships have unique Operation IDs. Unless specifically listed as an authorized user for these unique operations, data access is not available.

For more detailed information on administration of operations and user accounts, please review the [Administer Operations Documentation](#).

Managing *tLandings* configuration profiles

This year we added a new feature to the Processor Tender Interface (PTI), which was requested by several industry end users. Just as a reminder, the PTI is a small application used with *tLandings*. Both the PTI and *tLandings* applications are designed to facilitate electronic reporting on board tenders and set net beach trucks, at buying stations, and for dock deliveries. The PTI now allows you to create, edit, save, and select application configurations and species lists for specific salmon and groundfish fisheries. Once saved, the profiles can be used for the foreseeable future.

Configuration profiles allow you to customize the display of the *tLandings* application for a variety of fisheries that require different documentation. As an example, your processing plant office has tenders that specialize in salmon troll deliveries and other tenders that focus on gillnet fisheries.

Using the Configuration Profiles you can establish customized versions of *tLandings* for each of these fisheries. Alaska Department of Fish and Game salmon troll managers want information on the date fishing ended and processors need extensive grading and sometimes pricing information. Salmon seine and gillnet fisheries are not as complex and do not require the same level of documentation.

Configuration profiles can also be created for groundfish.

User documentation for the 2018 PTI and *tLandings* with detailed information is available for download [here](#).

Since we implemented this feature we have had some questions from our users.

Q. I established three different salmon configuration profiles, with different species lists. When I need to reconfigure a thumb drive, does the program automatically know which profiles to select?

A. No, the PTI displays the last Configuration Profile used. It may be the correct profile, but you always need to check. If the profile is not the accurate configuration, select Customize Install, which opens a new dialog what allows you to select the profile you need. We also recommend

you also check the species default to make certain it is also correct (Figures 3 and 4).

Q. I only have one salmon configuration profile. Will this profile always be selected when I reconfigure a thumb drive?

A. It should default to your configuration profile, but it is always important to review what was selected by default. See illustration 1, noting the Configuration Profile selected.

(continued on page 4)

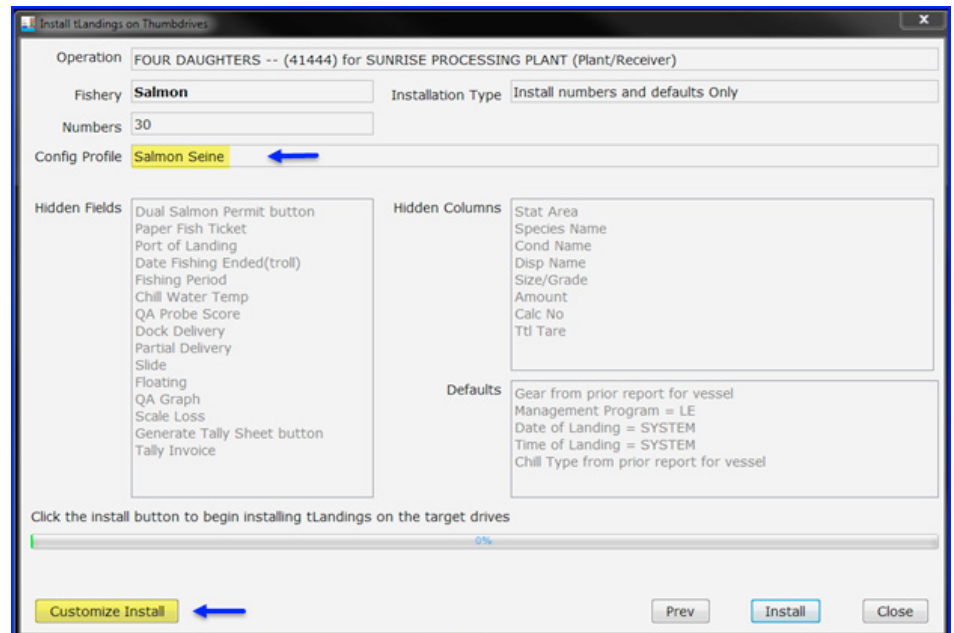


Figure 3.

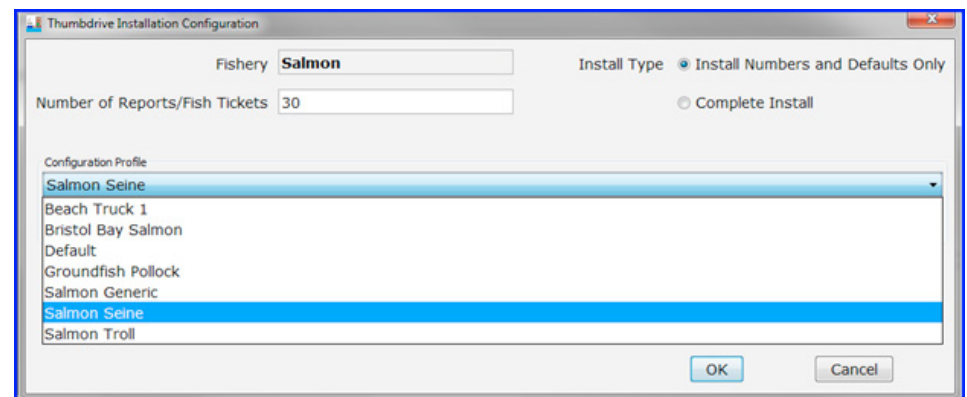


Figure 4.

(continued from page 3)

Reviewing the selection is always important when you are accessing the PTI from a shared folder on your network accessed by other staff.

Q. How do I edit a profile to change the tLandings application data field display or modify the species default file associated with this profile?

A. When you select the Customize Install, the dialog below appears. This allows you to add, edit, delete, and manage any configuration file (Figure 5).

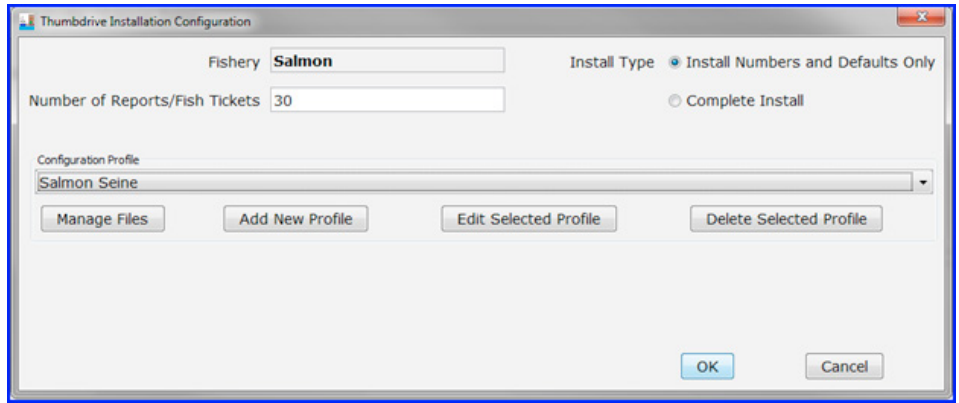


Figure 5.

Q. What happens when I download a new version of the PTI?

A. It is important to save all configuration profiles prior to downloading a new version of the PTI. You can save, restore and share configuration profiles from the Manage Files selection (Figure 6).

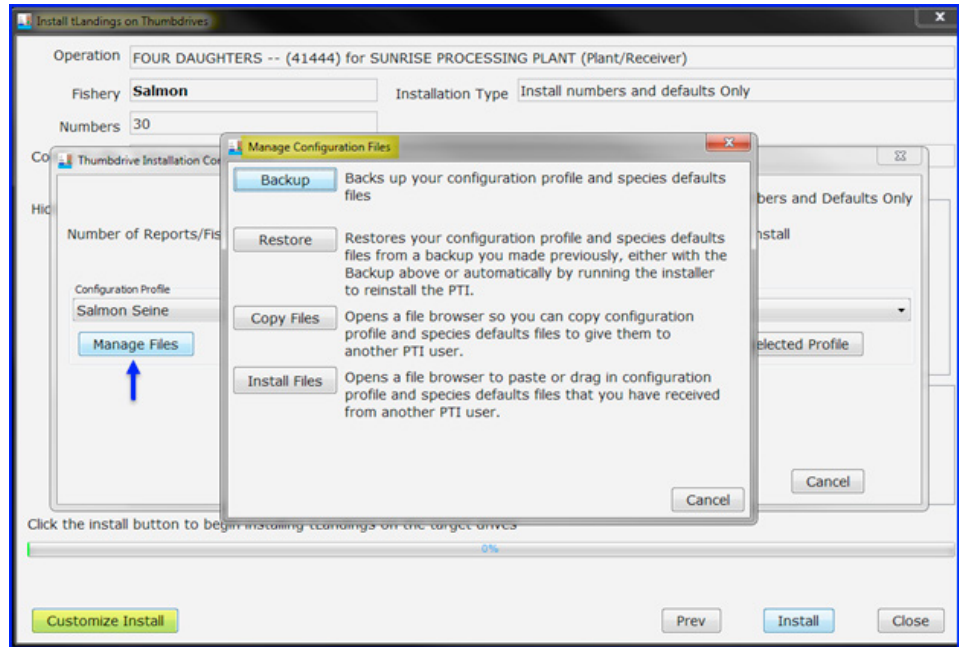


Figure 6.

Q. We want to install the PTI on our local network as we have several staff members that configure thumb drives. Is that possible?

A. Yes, but please contact eLandings@alaska.gov prior to initiating this process. Our programming staff can provide you with guidance on the best method for install. The eLandings programming team will be adding support for configuration profiles shared on a network drive at the beginning of 2019.



The eLandings newsletter is produced by the Alaska Department of Fish and Game. ADF&G administers all programs and activities in compliance with state and federal civil rights and equal opportunity laws. http://www.adfg.alaska.gov/index.cfm?adfg=home.ada_statement

