

CONTENTS

2016 eLandings COAR Reporting1

ODDS Trip Number3

Longline Pot Sablefish Fishery3

eLandings Operations: Buying Stations and Custom Processing3

tLandings for Salmon4

IPHC Regulatory Change: Head-on Pacific Halibut Landing Requirement4

eLandings Training Events4



Layout provided by the Alaska Department of Fish and Game. ADF&G administers all programs and activities in compliance with state and federal civil rights and equal opportunity laws. Obtain the full ADF&G and Americans with Disabilities Act and Office of Equal Opportunity statement online at [www.ADF&G.state.ak.us](http://www.adfg.state.ak.us) or from the ADF&G Public Communications Section at 907-465-6166. <http://www.adfg.state.ak.us/oeostate.php>

2016 eLandings COAR Reporting

The eLandings generated Commercial Operator’s Annual Report (COAR) is available for use as a convenient and easy way to submit the 2016 report. This feature allows industry to streamline the reporting process by downloading information that has already been provided to ADF&G through Landing Reports or on NMFS daily production reports. If the majority of fish tickets submitted by your operation are using the eLandings or tLandings application, most of the information required on the COAR report is readily available in a simple, easy to understand summarized report.

The COAR report is due each year by April 1 indicating the activities of the previous year for all entities that are the first purchaser or processor of commercially harvested resource. The COAR report specifically requires detailed information for all commercial purchases and processing activities. Most of this information is already available in the eLandings system at the time the fish is delivered and processed. This user-friendly feature allows industry staff

to download information from eLandings in the form of an Excel spreadsheet. This spreadsheet is populated in a format that corresponds to required fields on the COAR report. The spreadsheet is then edited to provide the price information and add any fish ticket information not entered in eLandings. The report is submitted electronically by uploading the revised spreadsheet into the eLandings system.

Of the many functions of the eLandings COAR, one feature is that the information provided in the file download is already summarized into the correct assignment of reporting codes as well as assignment of the COAR areas. Many resources are available, including the COAR codes assignment sheet; however, the amount of time spent tracking down codes is essentially eliminated. The spreadsheet will automatically summarize the buying and production information based upon the statistical area of harvest and then assign the information to the appropriate COAR area. Also, there is no need to separate out any unsold or unprocessed

TO MAKE A NEW REPORT, please select your operation and choose one of the following:

Operation:

Groundfish	Salmon	Shellfish
<input type="button" value="Groundfish Landing Report"/>	<input type="button" value="Salmon Landing Report"/>	<input type="button" value="Crab Landing Report"/>
<input type="button" value="Production Report"/>	<input type="button" value="Troll Landing Report"/>	
	<input type="button" value="Mixed Salmon Percentage"/>	

Year: Operation ID (or select above):

(continued on page 2)

(continued from page 1)

fish, the system already does that for you based on the disposition code.

The eLandings System will generate a spreadsheet summarizing all buying activity for each unique Processor Code. Fish custom processed on your behalf will also be included in the report.

We have added two new capabilities to the eLandings COAR generation and reporting process. COAR production is now generated from NMFS production reports, the same way buying is generated from landing reports. While NMFS production reports do not include salmon production for processors who process groundfish, this will provide much of the production data.

The second capability is detail reports for the generated buying and production lines. A new web page will allow COAR users to request a report for specific buying or production lines. One new report will show the generated buying lines, and the landing reports and fish tickets that provided data that went into those buying lines. The other report will similarly show production lines, and the production reports that provided data for those production lines.

Business rules have also been added for landing reports to make grading and pricing condition codes better match up to COAR needs. The COAR buying line generation also handles the ice and slime 2% deduction if no grading and pricing data is present. The eLandings integrated COAR report is designed to improve accuracy and increase efficiency when reporting the buying—and potentially the production—portion of the COAR.

SPECIES CODE	COAR AREA OF HARVEST	DELIVERY PORT	COAR AREA OF DELIVERY	GEAR CODE	CONDITION CODE	TOTAL WEIGHT	TOTAL AMOUNT	AVG PRICE (\$/LB)	PRICE NOT FINAL (FINAL/NOT FINAL)
110 FG	JNU	A1	A1		91	3	3,215		
130 FG	JNU	A1	A1		15	4	333		
143 FG	JNU	A1	A1		61	8	213		
200 FG	JNU	A1	A1		61	5	750		
270 FG	JNU	A1	A1		91	3	2,145		
410 E3	JNU	A1	A1		1	1	120		
410 A1	JNU	A1	A1		1	1	100		
410 B	HNS	A1	A1		1	4	150		
410 E1	JNU	A1	A1		3	4	55		
410 A1	HNS	A1	A1		15	4	33		
410 B	HNS	A1	A1		15	4	67		
410 D	JNU	A1	A1		15	4	318		
410 A1	NAK	T	T		3	4	500		
420 E3	JNU	A1	A1		1	1	4,900		
420 A1	JNU	A1	A1		1	1	544		
420 B	HNS	A1	A1		1	4	1,250		
420 E1	JNU	A1	A1		3	3	1,110		
420 D	JNU	A1	A1		3	3	5,000		
420 B	HNS	A1	A1		3	4	795		
420 B	JNU	A1	A1		4	1	100		
420 A1	JNU	A1	A1		15	3	128		
420 B	HNS	A1	A1		15	4	1,199		
430 D	JNU	A1	A1		3	1	8,200		
440 A1	JNU	A1	A1		1	1	604,000		
440 E1	JNU	A1	A1		1	1	18,766		
440 E3	JNU	A1	A1		1	1	20,278		
440 E2	JNU	A1	A1		1	1	10,250		
440 B	HNS	A1	A1		3	1	1,203		
440 B	HNS	A1	A1		15	1	492		
440 A1	HNS	A1	A1						
440 D	JNU	A1	A1						
450 D	JNU	A1	A1						
450 A1	JNU	A1	A1						
450 E1	JNU	A1	A1						
450 A1	HNS	A1	A1						
450 A1	JNU	A1	A1						
450 B	HNS	A1	A1						
450 D	JNU	A1	A1						
450 D	SIT		D						

Many users are already familiar with the eLandings system and will find the COAR reporting process a great enhancement and useful tool. This time-saving feature is available now and it's never too early or too late to get started. Additional information can be found on the ADF&G website located at <http://www.adfg.alaska.gov/index.cfm?adfg=fishlicense.coar>

If you have any questions regarding this reporting tool, please contact Shellene Hutter at ADF&G at 907-465-6131 or shellene.hutter@alaska.gov

Many processors import landing or production data from the eLandings database into their own business software and make adjustments to the data housed in this application, but not within eLandings. Slight variations in summarized pounds can occur when purchased pounds are compared within each dataset. Shellene Hutter is happy to assist you in identification of discrepancies and reconciliation towards generation of an accurate eLandings COAR.

eLandings
 Reporting Component of the
 Interagency Electronic Reporting
 System

Alaska
 Department of
 Fish and Game

International Pacific
 Halibut Commission

NOAA
 Fisheries

Reports Menu
User Profile
Change Password
Codes
Logout

Training Release 4.97 Build 1.2548

COAR Reporting

INFO - 1307: Report submitted

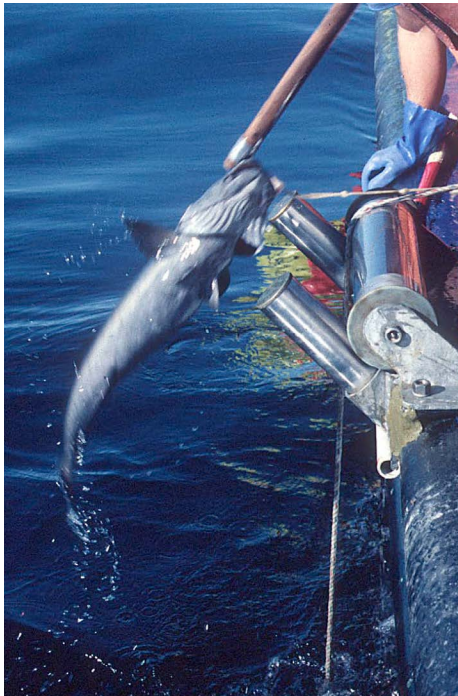
User: Leopard Shark Company: ZISSOU SEAFOODS PH (907) 555-1212 Email: shellene.hutter@alaska.gov

Operation: King Fish Process-King Cove Location: King Cove
 Processor Code: F0324 Year: 2016
 Report ID: 303791 Submit Date: 01/10/2017 08:48
 Company Name: ZISSOU SEAFOODS Contact: Leopard Shark (LSHARK) Accountant
 Address: 132 Easy St Juneau, AK 99801 Alternate Contact: Tommy Turbot (TTURBOT) Accountant

REPORT SUMMARY	Number of Lines	Number of Species	Total Weight	Total Amount
Buying	8	5	2,030	\$1,952
Production	5	4	1,675	\$3,524
Canned Production	0			
Custom Processing	0			
Custom Production	0			
Custom Canned Production	0			

Did you operate using Processor Code F0324 in 2016? Y
 Were fish tickets written using Processor Code F0324 in 2016? Y
 Did you operate only in the Exclusive Economic Zone (3-200 miles offshore) in 2016? N

REPORT STATUS: Submitted



Longline Pot Sablefish Fishery

Beginning with the 2017 IFQ sablefish and halibut season on March 11, longline pot gear for the Gulf of Alaska IFQ sablefish fishery will be allowed. The gear code for longline pots will be 91 - pot gear. Retention of legal-size halibut caught in pots will also be required if there are halibut IFQ permit holders on the vessel and any remaining IFQ quota is available. The Commercial Fisheries Entry Commission (CFEC) has established new CFEC permits for this fishery that are appropriate to the gear type and vessel length.

*Gaffing a sablefish in Prince William Sound.
©ADF&G. Photo by Ted Otis.*

All halibut retained and sold must be documented within the eLandings System using the appropriate CFEC permit card(s) and gear code 91. These annual permits are priced at \$75.00 each and are currently available at:

<https://www.cfec.state.ak.us/>

NOAA Fisheries permitting office, Restricted Access Management (RAM), can be contacted at (800) 304-4846 if anyone would like more information on pot gear tags and required federal permits.

CFEC SABLEFISH PERMITS		
VESSEL LENGTH	TRADITIONAL LONGLINE GEAR	POT GEAR
LESS THAN 60'	C06B	C09B
EQUAL TO OR > 60'	C61B	C91B
CFEC HALIBUT PERMITS		
VESSEL LENGTH	TRADITIONAL LONGLINE GEAR	POT GEAR
LESS THAN 60'	B06B	B09B
EQUAL TO OR > 60'	B61B	B91B

ODDS Trip Number

The Observer Program is still respectfully requesting that shoreside processors and tender vessel operators ask catcher vessel captains for their ODDS Trip number and enter it in the "header" section of the landing report. While this is not a required field, it is data that helps the Observer program and NMFS facilitate data analysis and evaluate observer coverage in the groundfish and halibut fisheries. Your assistance in collecting this data is very much appreciated. Users entering groundfish landing data may receive a warning message if the ODDS Trip number is not entered, but clicking on the *Save, Ignoring Warnings* button will allow you to move forward with your reporting.

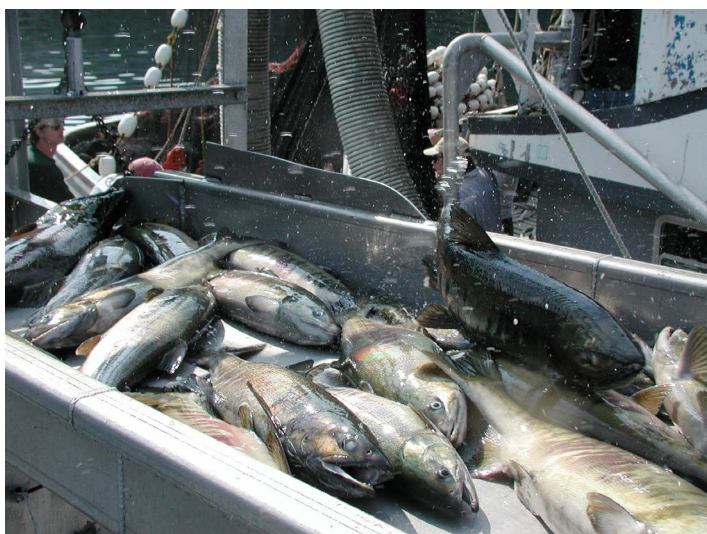
eLandings Operations: Buying Stations and Custom Processing

eLandings development staff recently rolled out some major operations structure changes that may have impacted some of users "child operations." Some Buying Stations and Custom Processing setups were inadvertently closed or archived. If you notice that you no longer have access to an operation you previously had authorization for or that you can see landing reports for operations that you don't recognize, please notify elandings staff as soon as possible so we can troubleshoot the issue without delay. We apologize for any inconvenience this has caused users and we are actively working on straightening out these issues.

tLandings for Salmon

The ADF&G staff are finalizing enhancements to the tLandings application for use with the summer 2017 salmon season. We plan to have all development work completed by mid-April and will distribute an additional *FishWire* that same month outlining enhancements to the Processor Tender Interface (PTI) and tLandings. This information will also be reviewed at the eLandings training workshop in Anchorage (see right).

In addition to enhancements to the tLandings application, we are working on a new reporting platform for tLandings salmon, tablets. The tablet application is being designed to facilitate electronic reporting for beach-based and small tender vessel landings. We will provide a brief demonstration of tablet tLandings at the Anchorage workshop.



Tendered chum salmon moving to hold. ©ADF&G.

IPHC Regulatory Change: Head-on Pacific Halibut Landing Requirement

The Commission adopted a proposal aimed at eliminating a recently identified bias in Pacific halibut removal estimates (net weight), by requiring all commercial Pacific halibut to be landed and weighed with their heads attached for data reporting purposes and to only be subject to a 32-inch minimum size limit. An exemption was agreed upon whereby vessels that freeze Pacific halibut at sea may land their frozen fish with the head removed and remain subject to a 24-inch minimum size limit only. For specifics on the regulation, please see the IPHC website (Section 13): <http://iphc.int/library/regulations.html>



eLandings Training Events

March eLandings Training Workshop – Petersburg

eLandings staff will be conducting a workshop in Petersburg, Alaska on March 7, 2017, to provide an overview of the eLandings system and applications as well as reviewing the IFQ groundfish landing process.

The meeting will be held at the Scandia House Hotel from 9:00 a.m. to 12:00 p.m. NOAA law enforcement staff will be there to answer questions as well. We are working on the agenda and will send it out to processor staff soon—please save the date!

April eLandings Training Workshop – Anchorage

The eLandings management team will be conducting a training workshop in Anchorage, April 25, 2017, at the Embassy Suites Hotel, 600 East Benson Blvd, Anchorage, Alaska. The workshop is scheduled from 9:00 a.m. until 12:30 p.m. We will be available in the afternoon from 1:30 to 3:00 p.m. for additional application practice as needed. The agenda for the workshop has yet to be fully determined, but will include formal presentations and application practice in separate training rooms for the eLandings web (IFQ and non-IFQ reporting) and for tLandings.

This workshop is an opportunity to learn about new features and revisions to existing applications, as well as a chance to ask questions, provide feedback, and practice using the reporting applications.

Please save this date if you would like to attend. We hope to see you there.